



LALFP SERIES

# LALFP

## Linear LED Food Processing Fixture

- Maintenance free long-lasting LEDs
- NSF Certified with Impact Resistant polycarbonate lens
- All exterior stainless steel hardware
- Large wiring access for ease of installation
- Extremely durable copper-free aluminum mounting feet & access plate with anodized aluminum housing
- 90 or 180 minute emergency with Self-diagnostics in accordance with NFPA 101® Life Safety Code



### LINEAR LED TECHNOLOGY



Approved

**LINEARITE**® \*

\* marca registrada MEXICO

#### FEATURES-SPECIFICATIONS

##### Applications

**NSF** (National Sanitation Foundation) approved for “Food Handling” areas, typically requiring non-glass lighting.

**ABS** (American Bureau of Shipping) type approval for use on decks, vessels, platforms, barges, ships and boats. Also suitable for docks and marinas.

##### Compliances

- UL-8750 for LED lighting
- ANSI/UL 1598(A)
- UL-844 Standard for lighting fixtures for hazardous locations, Class I, Division 2; Class II, Divisions 1 and 2; Class III
- CSA C22.2 no. 137-M1981 electric luminaires for use in hazardous locations
- Enclosed and gasketed
- Type 3, 4X
- IP66/IP67

##### Materials

- Housing – one piece clear anodized  $\leq$  .1% copper-free aluminum extrusion
- Endcaps & wiring – Access covers are copper-free ( $\leq$  .4%) aluminum with natural finish.
- External screws are 316 stainless steel
- Lens – Impact resistant polycarbonate lens available in diffuse or clear

Supplemental **20KA/10KV Surge Protection** is **standard** (for 120-277 VAC models)  
**10KA/10KV Surge Protection** (for 347-480 VAC)

#### LALFP & LALFPxiE Product Features

- LALFPxiE models have “built-in” battery backup for 90 or 180 minute battery backup
- Shallow design minimizes profile in work areas with low ceiling heights
- Diffuse Lens Standard to minimize glare; Clear Lens available
- Polycarbonate Single Lens L1 & L3; Double Lens model L5
- Variety of mounting options including swivel brackets, wall, ceiling brackets, or beam clamps
- End Caps each have 2 mounting feet built-in plus a safety strap attachment point
- Standard unit End Caps each have single a  $\frac{3}{4}$ ” NPT hub, and fixture is furnished with one  $\frac{3}{4}$ ” close-up plug and two  $\frac{3}{4}$ ” to  $\frac{1}{2}$ ” reducers – provides out of the box  $\frac{1}{2}$ ” dead-end to  $\frac{3}{4}$ ” feed-through flexibility. Metric openings are available.
- Standard LALFPs have one wiring Access Plate for easy access to terminal block.

#### Electronics Includes:

- Self-diagnostics monitors LED status, LED driver circuit, battery capacity and charger function and displays any fault detection by means of a flashing code
- Self-Test feature automatically runs a 1 minute test once a month and an alternating 30-60 minute test once every 6 months. LED indicator provides visible fault detection and charging status
- User initiated 1, or 90-minute system test feature
- 15 minute re-transfer delay
- Automatic unit transfer in brown-out conditions (below 80% of nominal AC input voltage)

Class I, Div. 2, Groups A, B, C, D  
Class I, Zone 2, Groups IIC, IIB, IIA  
Class II, Div. 1 & 2, Groups E, F, G  
AEx nAll, Ex nAll

Wet Locations  
Type 4X  
IP66/IP67

Marine Rated (US only)  
ABS Type Approval  
NSF Food Handling 2017

Certified - File LR11713

IECEx Rated  
Zone 2 and Zone 21 areas  
Ex nA IIC T6 to T3, Gc  
Ex tb IIC T95°C Db  
Tamb -50°C < Tz < +65°C, IP66

IECEx Certificate  
QPS 15.0010

ATEX Certificate  
CML 15ATEX4081X (nA)  
&  
CML15ATEX3082X (tb)

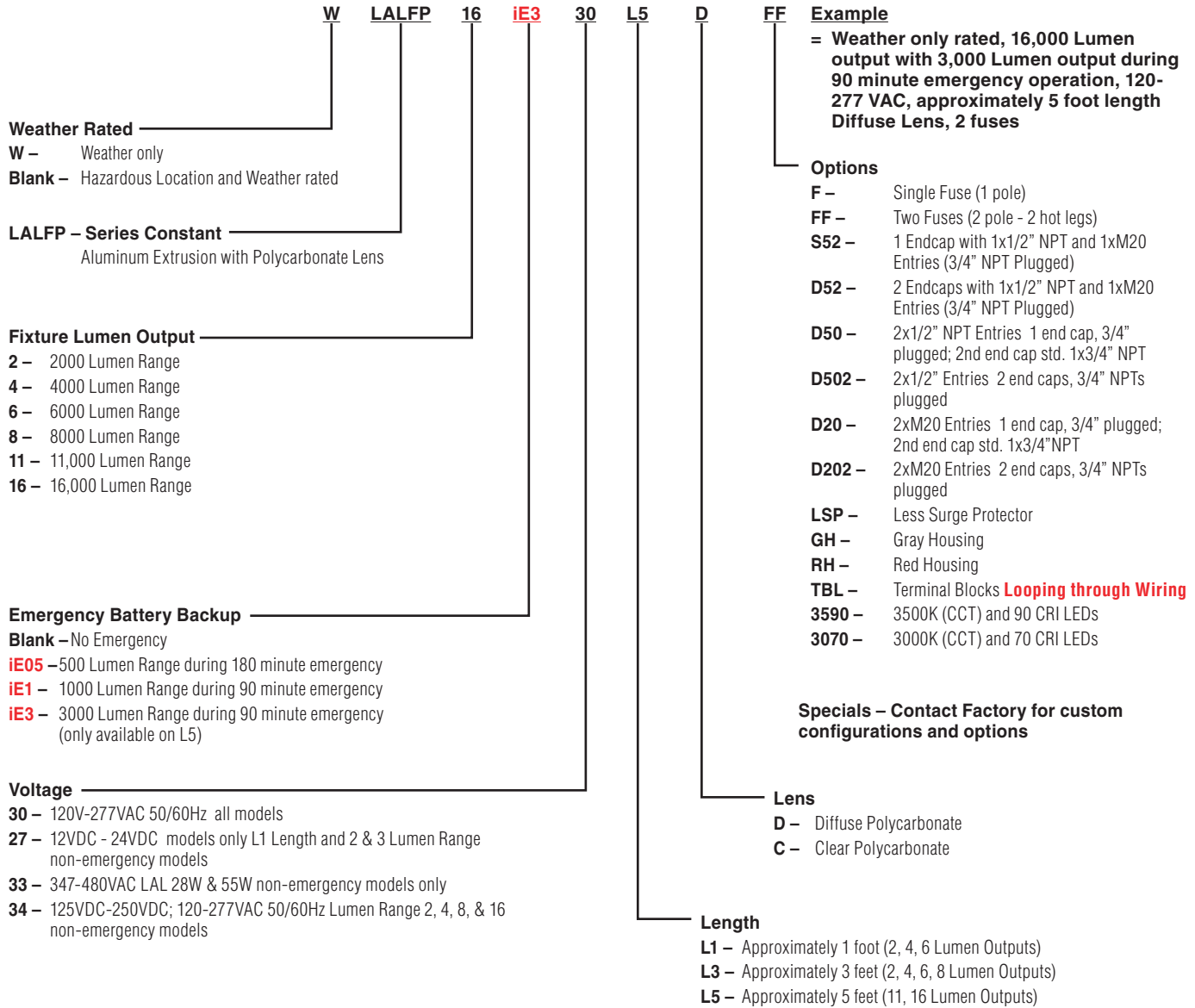
#### LED Features and Standards

- Many Midpower LEDs blend light to simulate fluorescent tubes
- Chromaticity outputs: standard – 5000K 70 CRI  
3590 option – 3500K 90 CRI  
3070 option – 3000K 70 CRI
- 3590 option is not available with the L1 length
- 3070 option is only available on L1 length and the 2 & 4 lumen outputs
- LED Array Life – 100,000+ hours with 70% initial lumens
- Long Fixture Life – 50,000 - 55,000 maintenance free hours
- Ambient suitability -40°C to 65°C (see tables). -20°C to 50°C Ambient suitability for Emergency models.
- Instant On – Including after power interruption
- World Voltage 120 - 277VAC 50/60Hz
- Solder-LESS LED Board Connections – Vibration Resistant



# LALFP SERIES

## CATALOG LOGIC



### Energy Savings

LED VS FLUORESCENT WATTAGE & DELIVERED LUMENS					
CATALOG NUMBER	LUMENS	L/W	FLUORESCENT		L/W
LALFP230L3C	2479	138	40W	1x40W BX	63
LALFP430L3C	3624	129	55W	1x55W BX	65
LALFP630L1C	5515	122	64W	2x32T8	80
LALFP830L3C	7709	128	120W	2x60T12HO	56
LALFP1130L5C	11032	138	162W	3x54T5HO	65

# LIGHTING

LALFP SERIES



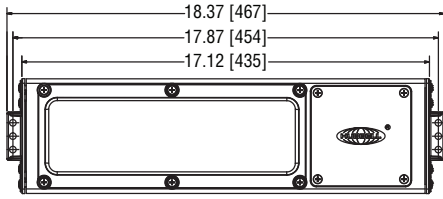
## ORDERING INFORMATION

ORDERING INFORMATION AND AMBIENT SUITABILITY							C1D2 A, B, C, D/ ZONE 2 IIC, IIB, IIA			C1D2 E, F, G SIMULTANEOUS			C2D1 E, F, G			IEC ZONE 2			IEC ZONE 21			
CATALOG NUMBER	WEIGHT LBS./KG	WATTS	LENGTH IN / MM	VOLTAGE	AMPS	LUMENS DIFFUSE/ CLEAR	40°C	55°C	65°C	40°C	55°C	65°C	40°C	55°C	65°C	40°C	55°C	65°C	40°C	65°C		
LALFP230L1D	12.03 / 4.49	15	18.73 / 476	120/277 VAC 50/60 Hz	0.15-0.06	1503 / 1640	T5	T4A	-	T4A	T4A	-	T4A	T4A	-	T5	T4	-	T4	-		
LALFP230L3D	17.90 / 8.1	18	32.6 / 828		0.15 - 0.06	2272 / 2479	T6	T6	T6	T4A	T4A	T4A	T4A	T4A	T4A	T6	T6	T5	T4	T4		
LALFP230L4D	12.90 / 9.9		51 / 1295		0.30-0.13	3261 / 3558	T5	T4A	-	T4A	T4A	-	T4A	T4A	-	T5	T4	-	T4	-		
LALFP430L1D	12.03 / 4.49	35	18.73 / 476		0.23 - 0.10	3321 / 3624	T6	T6	T5	T4A	T4A	T4A	T4A	T4A	T4A	T6	T6	T5	T4	T4		
LALFP430L3D	17.90 / 8.1	28	32.6 / 828		0.38 - 0.17	5136 / 5604	T5	T4A	-	T4A	T4A	-	T4A	T4A	-	T5	T5	-	T4	-		
LALFP430L4D	12.90 / 9.9		51 / 1295		0.38 - 0.16	5054 / 5515	T6	T5	-	T4A	T4A	-	T4A	T4A	-	T6	T5	T5	T4	T4		
LALFP630L1D	12.03 / 4.49	45	18.73 / 476		0.50 - 0.22	7064 / 7709	T6	T5	-	T4A	T4A	-	T4A	T4A	-	T6	T5	-	T4	-		
LALFP630L3D	17.90 / 8.1	45	32.6 / 828		0.67 - 0.29	10110 / 11032	T6	T5	-	T4A	T4A	-	T4A	T4A	-	T6	T5	-	T4	-		
LALFP630L4D	12.90 / 9.9		51 / 1295		1.00 - 0.43	15090 / 16467	T6	T5	-	T4A	T4A	-	T4A	T4A	-	T6	T5	-	T4	-		
LALFP830L3D	17.90 / 8.1	60	32.6 / 828																			
LALFP830L4D	12.90 / 9.9		51 / 1295																			
LALFP1130L5D	36.50 / 16.6	80	57.9 / 1471																			
LALFP1630L5D	36.50 / 16.6	120	57.9 / 1471																			
WLALFP230L1D	12.03 / 4.49	15	18.73 / 476		120/277 VAC 50/60 Hz	0.15-0.06	1503 / 1640															
WLALFP230L3D	17.90 / 8.1	18	32.6 / 828			0.15 - 0.06	2272 / 2479															
WLALFP230L4D	12.90 / 9.9		51 / 1295			0.30-0.13	3261 / 3558															
WLALFP430L1D	12.03 / 4.49	35	18.73 / 476	0.23 - 0.10		3321 / 3624																
WLALFP430L3D	17.90 / 8.1	28	32.6 / 828	0.38 - 0.17		5136 / 5604																
WLALFP430L4D	12.90 / 9.9		51 / 1295	0.38 - 0.16		5054 / 5515																
WLALFP630L1D	12.03 / 4.49	45	18.73 / 476	0.50 - 0.22		7064 / 7709																
WLALFP630L3D	17.90 / 8.1	45	32.6 / 828	0.67 - 0.29		10110 / 11032																
WLALFP630L4D	12.90 / 9.9		51 / 1295	1.00 - 0.43		15090 / 16467																
WLALFP830L3D	17.90 / 8.1	60	32.6 / 828																			
WLALFP830L4D	12.90 / 9.9		51 / 1295																			
WLALFP1130L5D	36.50 / 16.6	80	57.9 / 1471																			
WLALFP1630L5D	36.50 / 16.6	120	57.9 / 1471																			

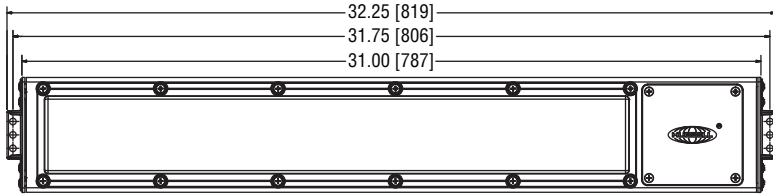


# LALFP SERIES

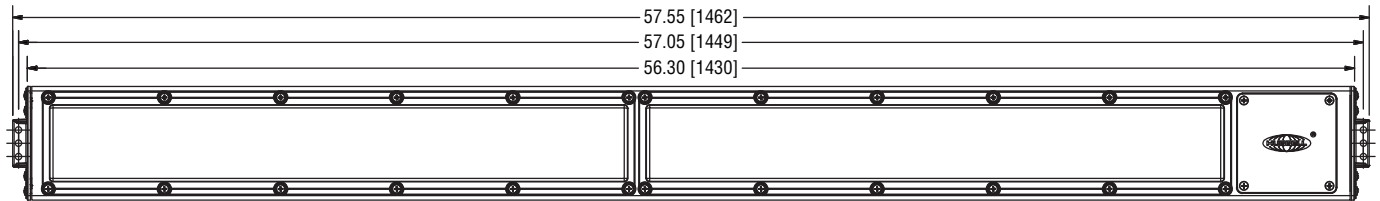
## DIMENSIONS



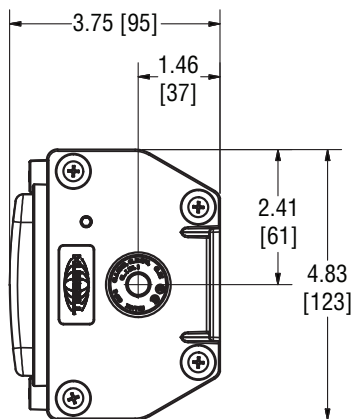
LALFP-L1 Single Access Panel



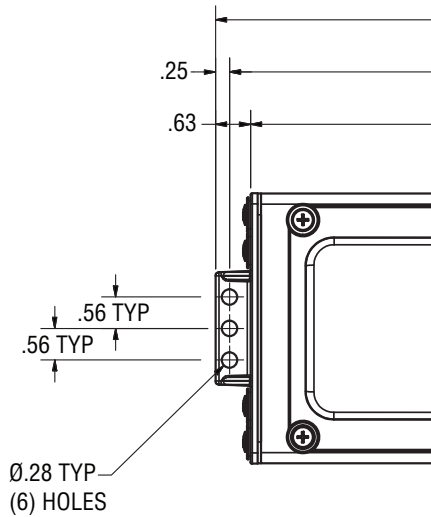
LALFP-L3 Single Access Panel



LALFP-L5 Single Access Panel



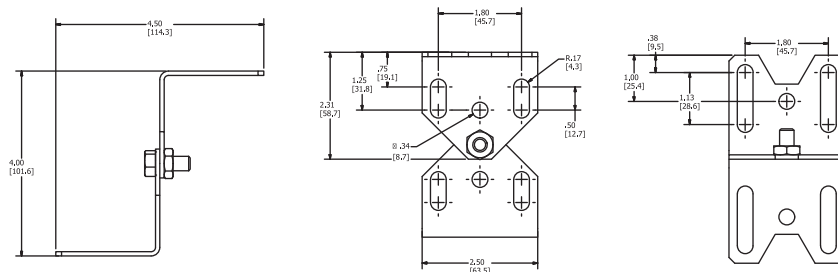
End View





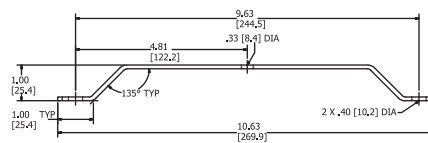
### ACCESSORIES AND REPLACEMENT PARTS

ACCESSORIES AND REPLACEMENT PARTS	
LAL-SB	Swivel Bracket Set w/ Adjustable Height; includes 5/16" bolts/nuts/lock-washers for attachment to LAL(C) "slots"; can also be attached to end cap mounting feet with FBO bolts.
LZCB	Ceiling Bracket Set with Stainless Steel Bolts
LZWB	Wall Bracket Set with Stainless Steel Bol
LAL-BC	Steel/malleable Iron with Zinc electroplate for corrosion resistance; includes Stainless Steel Bolts to attach to LAL(C) "slots"
LAL-EB	Eyebolt Set with Stainless Steel Bolts
VMSC10	10' Stainless Steel Safety Cable with loop grip
LALG	Stainless Guard for 1 LAL Lens, order two for 2 lens models
LALCG	LALC Stainless Guard
LAL-LENSCLR	Single Clear Lens with Gasket for L3 & L5 Lengths
LAL-LENSDIF	Single Diffuse Lens with Gasket for L3 & L5 Lengths
LALC-LENSCLR	Single Clear Lens with Gasket for L1 Length
LALC-LENSDIF	Single Diffuse Lens with Gasket for L1 Length

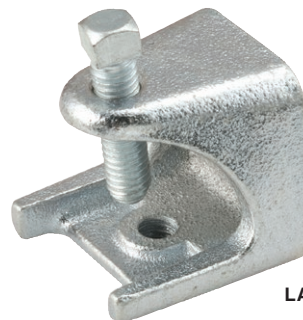


LAL-SB Dimensions – extended shown

**Ceiling Bracket Set**  
Part Number LZCB  
Stainless Steel (natural finish)



VMSC10 Safety Cable



LAL-BC Beam Clamp

